



Go FAR
faith. action. results.
The Campaign for Catholic Relief Services

Together

we will Go FAR

Each year, CRS supports more than 150 million people in more than 100 countries. For over 75 years, we have worked in tandem with a network of 2,000 local partners and the people we serve.

We are proud of this history. Our faith has driven us through the decades to build a world-renowned, Catholic, professional humanitarian and development organization. It is a blessing and a privilege to reflect on the people CRS has reached, and the supporters who made this possible.



But now our faith calls us to go even further. Now it is time to take our work to scale. Through its Vision 2030 agency strategy, CRS looks to the evolving needs of the people and communities we serve.

The strategy builds on our strengths and values, but it is bigger than we are. Through Vision 2030, CRS has identified priority outcomes that best align with our mission and expertise. The Go FAR campaign will bring this vision to life with faith, action and results.

This bold, groundbreaking campaign will be an accelerator toward Vision 2030, helping us fulfill our strategy. Ultimately, the private support mobilized by Go FAR will leverage public support and the work of our partners to create an epic force for good—a force that leads to the tangible, global-level change called for by the Sustainable Development Goals, which are supported by Pope Francis.

Through Go FAR, CRS seeks to raise \$275 million to drive our impact like never before. Success will depend on our closest donors, partners and the people we serve joining together to create transformational change.

Go FAR highlights five priorities where the agency can build on its strengths, increase its influence and integrate our work with the United Nation's Sustainable Development Goals—a universal call to action for 17 global priorities.



BUILDING HOMES for 1.5 million people affected by crisis so they can live with dignity and begin to restore their lives.



TRANSFORMING LIVELIHOODS by helping 1 million farm families grow better crops, feed their families and overcome poverty and hunger.



EMPOWERING YOUTH, reaching 5 million young women and men with the training and opportunities to thrive.



STRENGTHENING FAMILIES to help 1 million children reach their full potential in a safe and nurturing environment.



DRIVING MISSION AGILITY by providing flexible funding to advance innovation, leverage resources, act quickly, partner for good and sustain our presence.

This historic campaign is a call to go far to champion vulnerable communities to become agents of their own destiny. This is a movement about faith, action and results. **It's what we should do, and what we can do, together.**

Cast Out to the Deep

A Message From the Honorary Chair

It was March 2013 when I sat in Rome among the conclave of cardinals voting on our new pope. I admit I was feeling quite proud of myself until it hit me:

As I stand before Jesus at the judgement, will he ask me about professional milestones? No. He will ask: “When I was hungry, did you feed me? When I was thirsty, did you give me something to drink?”



Many of us have achieved great things. But what exactly has Jesus asked of us? His call is simple, yet profound: Love of God and love of neighbor—especially the poor.

Today, our days seem darker than usual. No doubt you have wondered, “What should I do to live my faith? How can I help those in greatest need?” Go far is the answer.

Catholic Relief Services’ Go FAR campaign recalls Jesus’ words from Luke, Chapter 5, when he told his disciples to cast out to the deep. They were exhausted and cynical, but Jesus insisted they get back out there. He reminded them that they should do more, and that they can do more.

As Catholics, we know the essence of the Church is more than what we see in front of us. It’s in the meaning of the word catholic that we are a Church for all—a Church that is universal, global, everywhere. We are called to cast out. We are called to go far.

I’ve been fortunate to visit CRS programs in the field, and I can attest that going far is what CRS is all about. CRS exists to serve the most vulnerable people with love, joy and faith, no matter what.

With CRS as our vehicle, I hope we can all deepen our connection to the primacy of serving the poor. Together we can go far, in faith, for the good of all.



+ Tim. Card. Dolan

Cardinal Timothy Dolan, Archbishop of New York
HONORARY CHAIR | GO FAR CAMPAIGN

Pictured: Cardinal Dolan, visiting the people of Port-au-Prince, Haiti, with CRS after the devastating earthquake in 2010.
Photo courtesy of William Farrington

Because We Should, Because We Can

A Message From the CEO

At Catholic Relief Services, we go far by putting our faith into action to achieve results. It's what Jesus called us to do—and what, through the generosity of our donors, we have done since 1943.

Each day, I am deeply humbled to know we are trusted, on behalf of Catholics in the United States, to follow the Gospel imperative of service to the poor around the world. And now we have the opportunity to take our work to the next level, and the world needs us to act now.

In the United States, many of us have felt overwhelmed by the COVID-19 health crisis, economic uncertainty and social unrest. These crises have challenged our well-being, our families and our communities, and yet we know we are blessed and we know our brothers and sisters overseas still urgently need us.

CRS knows how to act fast in order to tackle intractable issues like poverty and hunger to prevent and alleviate suffering.

We have a vast Church and professional network enabling us to reach even the most underserved communities. Today, our faith drives us to go further, to build on our successes—because we should, and because we can.

Knowing this, CRS developed Vision 2030, our boldest agency strategy to date. Through this 10-year roadmap, we aim to address some of the most pressing needs of the 21st century. And it is the Go FAR campaign that will make this work possible.

Through Go FAR, we challenge ourselves to act boldly, not just to combat poverty and injustice, but to achieve these results with God's help at a much greater scale.

It is time for a movement. We must rise to the call.



A handwritten signature in black ink that reads "Sean L. Callahan".

Sean L. Callahan
PRESIDENT AND CEO | CATHOLIC RELIEF SERVICES

Building Homes



Home is everything.

It's the base for stability, identity and love. In following its Gospel mission, CRS is ready to deliver safe and dignified housing to people uprooted by crisis.

The loss of a home can fracture a family's identity and the roots of community. It can gravely impact safety, health, education, prosperity, emotional well-being and dignity.

The world is seeing an increase in people affected by crisis. Across the globe, communities face changing climates, natural disasters, population growth, economic inequality, political conflicts and pandemics. There is no time to waste.

It's urgent that we provide the growing number of displaced people with access to comprehensive shelter solutions that enable families and communities to recover and flourish. CRS is ready to put faith into action and expand shelter programming based on our core values—focused not just on building roofs or walls, but homes and communities.

Catholic Relief Services seeks to raise \$45.5 million to build homes for 1.5 million people.

CRS experts design home models based on local contexts, so they are built safely and affordably. And we often engage families in the home-building process—from choosing which home model will best suit their needs, to training adults to participate in basic construction or repairs.

Over the next 10 years, the agency will go beyond providing shelter and immediate relief, to strengthening community infrastructure and building an environment where people can thrive.

1. Norwegian Refugee Council

ABOUT

14 MILLION

PEOPLE WILL BE DISPLACED

**EACH YEAR FOR THE
NEXT 20 YEARS ¹**



Key Projects

- **Building Homes for Refugees in Uganda**
- **Building Homes for Survivors of Emergencies in Asia**

Key Projects

Building Homes for Refugees in Uganda

Uganda is the site of one of the largest refugee crises in the world. Thousands of people from South Sudan and the Democratic Republic of the Congo have arrived seeking refuge from conflict, violence, unrest and a deadly Ebola outbreak.

Many are living in refugee settlements, but still lack access to basic shelter, clean water, sanitation and living supplies. In this context, many are also especially vulnerable to COVID-19.

CRS is working with refugees and members of the host community to create safe and dignified homes, so that vulnerable families have the space to recover and rebuild their lives.

In collaboration with community members, local partners and the Ugandan government, CRS is providing people with comprehensive support. This includes building homes, preventing the spread of COVID-19, providing access to water and sanitation, strengthening livelihoods and promoting community engagement.

Amid disaster, we are uplifting the whole person, the whole family, the whole community.

Building Homes for Survivors of Emergencies in Asia

Vulnerable communities in Asia have recently faced some of the world's most catastrophic emergencies. Many people are uprooted and need safe refuge.

Indonesia and the Philippines have endured cyclical cyclones and massive earthquakes. Nepal is still reeling from back-to-back earthquakes in 2015, which destroyed hundreds of thousands of homes. In Bangladesh, more than 700,000 Rohingya refugees who fled targeted attacks now live in the world's largest, most densely populated refugee settlement.²

When disaster strikes, lives are upturned. But CRS is there—on the ground, providing comprehensive emergency support in Indonesia, the Philippines, Nepal and Bangladesh.

Together with our partners, CRS will help families in Asia build safe, dignified homes and infrastructures so they can survive and recover. We will also assist families with livelihoods support, and provide local communities and governments with training that ensures they are prepared to continue this work effectively and sustainably during future emergencies.

CRS knows that “home” is more than a building project. Working alongside survivors in Asia, we will not only construct roofs and walls according to proven methods—we will help families build homes and communities where families can flourish.

Homes of Peace: **Meet Annet**

“

I'm very happy
CRS built me
a house! I can
imagine being
happy there.”

—Annet



Photo by Philip Laubner/CRS

When she was just 12 years old, Annet's parents died, leaving her to raise her three younger siblings. Then war broke out, and Annet was forced to flee South Sudan. She led her young family along the dangerous journey to Uganda, traveling by night and carrying her baby sister on her back.

When they first arrived at Uganda's Bidi Bidi Refugee Settlement, they stayed in a tent. It was torn and the rain leaked in. But

CRS helped them build a sturdy, secure home, complete with a water tap and locking doors.

“I'm very happy CRS built me a house,” says Annet. “I can imagine being happy there. I see my siblings happy and feel hope for them.” Now she dares to dream of a brighter future. “I hope my siblings will get proper educations and stay healthy. I hope to raise them well, and I know I can do it with the help of CRS and my Catholic faith.”

Transforming Livelihoods



It starts with the land.

CRS is answering the Gospel call to alleviate suffering in a bold way—moving farming families out of poverty by restoring degraded land.

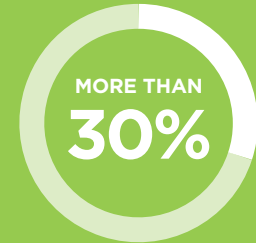
The world's most vulnerable families depend on farming for food and income. But far too many live on degraded land that cannot produce the crops they need. This exacerbates poverty and hunger, contributes to unemployment, triggers migration and displacement, and escalates conflict.

Now is the moment to act, and CRS has a solution. We are poised to build on our successful agricultural programming to transform livelihoods and landscapes on a regional scale. Over the next 10 years, we will expand proven land restoration models and help people overcome poverty—while protecting the planet for future generations.

Catholic Relief Services seeks to raise \$45.5 million to help 1 million farm families and restore 4 million acres of land.

We are ready to expand our programming reach as never before by shifting from a farm-by-farm model to one that can be adapted across entire regions to drive global impact. We are ready to lead a global land restoration movement—one that keeps vulnerable people at its center and restores not only land, but well-being, opportunities and dignity.

³. Cornell University



**OF THE WORLD'S
FARMLAND HAS BECOME
UNPRODUCTIVE IN THE
LAST 40 YEARS ³**



Key Projects

- **Protecting Rainforests in Madagascar**
- **Promoting Water-Smart Agriculture**

Key Projects

Protecting Rainforests In Madagascar

Madagascar is an epicenter of unique biodiversity, with rare and valuable rainforests. It is known as “Spice Island”—the world’s largest producer of vanilla and among the leading producers of other valuable crops like pepper, cloves, turmeric and cinnamon, which grow in its forested areas.

But the people of Madagascar aren’t benefiting from its astounding resources. Instead, they are living in extreme poverty and struggling to feed their families. Most farmers grow rice as their main crop, even though they must clear their precious rainforests for low-yielding harvests. But from inside the forest, they can grow something more profitable by weight than silver.

By working with farmers to grow spices like vanilla, turmeric and cinnamon, CRS is helping Malagasy farmers increase their income from \$300 to \$3,000 per year—and protecting rainforests for future generations.

Promoting Water-Smart Agriculture

About 75% of farmland in Central America suffers from degraded soil.⁴ Extreme or erratic weather makes it even more difficult for more than 2 million farm families to grow crops on their damaged lands.

Smart agricultural choices are vital—now more than ever—but some traditional farming techniques have become detrimental in the long term. Without healthy farms, families are driven deeper into poverty.

CRS is transforming lives and landscapes from the ground up by building farmer knowledge of water-smart agriculture. We help people learn practical, effective methods to grow plentiful harvests, restore soil, manage water and adapt to increasingly volatile climates. CRS is bringing these practices to scale in El Salvador, Guatemala, Honduras, Nicaragua and Mexico.

By regenerating and protecting soil, and making efficient use of water, CRS will optimize productivity so farmers can get the most out of every raindrop.

A New Frontier: **Meet Félicité**

“

**We take care of
this domain
together
and plant
together.”**

—Félicité



Photo by Mark Metzger/CRS

Félicité remembers when the forest around her home in Madagascar was cleared. Her father had to cut down the trees to feed his family.

Félicité learned to farm from her father. Their family depended on rice, and later began growing bananas and coffee. But their income was unreliable. The banana trees became diseased and the coffee trees, old and fruitless.

Then the family began growing vanilla. Because the vanilla plant is a vine, it needs a tree to wrap around and a forest to grow in. Today, Félicité teaches her children and her neighbors the art of growing vanilla—and protecting the rainforest. “We take care of this domain together and plant together,” she says. Vanilla is opening new horizons for Félicité, her family and her community.

Empowering Youth



Young people are our future.

But the most vulnerable face conflict, gangs, migration, and rapidly changing climates and technologies. With their path to success growing ever steeper, it is time for us to act. Called by our Gospel mission, CRS is launching a global initiative to educate, employ and empower young people.

Too many young men and women are out of school, unemployed or underemployed. Without safe opportunities to learn and work near their homes, their lives—and the global economy—are suffering. We can reverse this trajectory.

Over the next 10 years, CRS will equip young people with the skills to find jobs, start businesses and return to school. Its proven approach provides young people in need with life and business skills, mentoring opportunities, and access to funding for new businesses.

Catholic Relief Services seeks to raise \$26 million to empower 5 million young people.

By giving young people the chance to pursue safe, productive futures in their home communities, we can break the chains of poverty. Together, we will transform a generation.

CRS IS ON PACE TO
INCREASE THE SIZE

OF OUR YOUTH PROGRAMS

BY 500%

IN 10 YEARS



Key Projects

- **Fostering Workforce Development**
- **Boosting Digital Entrepreneurship in East Africa**

Key Projects

Fostering Workforce Development

The right to work is fundamental for all people. Yet new generations are growing up without jobs to turn to, or the skills to forge their own path.

In many developing nations—where youth populations are growing exponentially—there are few workforce preparedness opportunities to equip young people with marketable skills. Where programs do exist, there are serious gaps in services. Often, programs focus on job placement or teaching technical skills, but few support both. Rarely are youth supported in developing the soft skills they need to excel.

CRS is empowering youth by filling these resource gaps. We are building on our proven, comprehensive youth programs and bringing them to scale through partnerships with governments and businesses.

Beginning in El Salvador, Senegal and Ghana, CRS will provide young women and men with life and job skills training on topics like entrepreneurship, financial literacy and leadership. CRS will also engage public and private groups to help them build or improve their ability to promote the employability of young people in their own communities.

When young people acquire holistic, market-driven livelihoods support—in environments that recognize and support their needs—they have a real chance to thrive.

Boosting Digital Entrepreneurship In East Africa

East Africa is younger than ever. In Tanzania, for example, two-thirds of the population is under age 25. Many young Tanzanians are trying to enter the job market, but only enough formal sector jobs are created to absorb about 6% of them each year.

Out of desperation, roughly 75% of young Tanzanians are working in the insecure “gig economy” and earning next to nothing. Young men and women in remote, isolated villages are especially cut off from opportunities to grow their futures.

CRS is poised to build on our experience empowering youth by bringing our work to scale in Kenya, Uganda, Rwanda and Tanzania.

We will enroll youth in our proven microfinance and entrepreneurship programs, and complement these activities with digital learning opportunities. CRS’ digital platforms will be accessible by even the simplest cell phones, and will provide youth with online vocational courses and connections with virtual mentors.

Together we can empower more young men and women with the knowledge and agency to gain safe, formal employment and build profitable enterprises of their own.

A Face of Tomorrow: **Meet Bayron**

“

Once someone asked me if I saw a better future for my country. Now the truth is, ‘Yes!’ ”

—Bayron

At 26, Bayron was in search of more than a job—he wanted a career that would support his family in the long term. In El Salvador, a country facing drought and land degradation, farming seemed to hold little promise.

Then Bayron enrolled in a CRS training program on water-smart agriculture. “It was customary to use too many chemicals. To spend too much on fertilizers. To sow the way my grandfather, my great-grandfather taught me,” Bayron says. “With training, the more we learn, we can say, ‘This way of farming is not the best.’ ”

Now Bayron works with a group of young people trained by CRS to teach farmers in his community how to get the most from their land. They teach and test farming techniques that produce healthier crops by restoring natural resources. “It works very differently from traditional farming, to preserve water and soil,” he says. “For us, that is our treasure.”

It is the win-win solution needed to evoke true, lasting transformation. “Once someone asked me if I saw a better future for my country. Now the truth is, ‘Yes!’ ” Bayron says. “To do good, you don’t wait for tomorrow. Just do it right now: A good thing for change.”



Photo by Oscar Leiva/Silverlight for CRS

Strengthening Families



Children deserve safe, nurturing families.

Driven by our faith to keep loving families together, CRS is poised to revolutionize the care and support of children and families worldwide.

Families are key to a child's success. Without family, a child's well-being is threatened. His or her physical, emotional and intellectual development can suffer. And children living in extreme poverty are especially vulnerable, since poverty places heavy strains on families.

Many parents in the poorest communities cannot afford food, education or health care. Without strong support systems, many make the heartbreaking decision to place their children in orphanages as a way to secure their basic necessities.

Catholic Relief Services seeks to raise \$13 million to support 1 million children and their families.

Working with Church partners, CRS is employing a holistic approach to family strengthening by working with families, governments and orphanages. Over the next 10 years, CRS will work to ensure all children and families have the lasting support they need to thrive.

Each day matters for these children and their parents. We must promote healthy, happy homes.

80% to 90%

OF CHILDREN LIVING
IN ORPHANAGES

HAVE A **LIVING PARENT**



Key Projects

- **Changing the Way We Care**
- **Supporting Vulnerable Children and Families**

Key Projects

Changing the Way We Care

It's shocking but true: 80% to 90% of children in orphanages have a living parent. In the world's most vulnerable communities, parents can think they have no choice but to place their children in orphanages, hoping to give them a better life.

But a century of research proves children achieve better outcomes in families. Most orphanages cannot provide the individualized care and attention that children require in their early years. Orphanages are a symptom of poverty—never the solution.

Working with partners, communities and families, we can strengthen the way societies care for children in need. We have decades of experience connecting families with the support to thrive, and we are ready to build on this momentum to scale our adaptable model across the world.

Over the next 10 years, CRS will help children reunite with their families or prevent them from being separated in the first place. Families will receive the direct support, resources and skills they need, and orphanages will be transformed into family and community service centers.

We are strengthening families, reforming national systems and promoting safe, nurturing family care. Stronger families mean stronger people, communities and nations. There is no time to wait.

Supporting Vulnerable Children and Families

Children living in extreme poverty often struggle with malnutrition, preventable childhood diseases and dropping out of school. Many are vulnerable to abuse, exploitation and family separation. Such hurdles can leave lasting scars and prevent children from achieving their God-given potential.

CRS knows there is a better way forward. As a thought leader in health, education and microfinance, we can provide children and families with the comprehensive support they need.

To ensure lasting change, we are helping both families and systems transform. We empower families by helping caregivers learn positive parenting skills, connecting families with support networks, and helping children access key social services. And we equip local service providers with the training and resources to provide effective health and psychosocial services.

Families are at the heart of our approach. As Pope Francis reminds us, families prepare children to be “beacons of goodness.” Together, we will make this a world where every child grows up in a safe and nurturing family.



A Family United: **Meet Reyna**

Reyna was 10 when her mother left to work in Zacapa City. After six months apart, the family was reunited.

Ten-year-old Reyna, wearing a red shirt in the back row, smiles with her four nieces and nephews beside a CRS staff member.
Photo by CRS Staff

Reyna was 10 when her mother left to work in Zacapa City, leaving her to care for her four younger nieces and nephews in their town in Guatemala. Her mother, Ana Maria, was the family's only breadwinner. She hated to leave, but she had no choice. Authorities soon discovered the children had no adult supervision. They were taken from home and placed in a state orphanage.

Luckily, two CRS staff members—a social worker and a psychologist—had begun work in the orphanage. They sought out

cases where children could be reunited with a willing relative if only that relative was provided the necessary support. Cases like Reyna's.

Ana Maria was overcome with joy and relief. After six months apart, the family was reunited. With guidance from CRS staff, Ana Maria was able to enroll the children in school and earn sufficient household income. Today Ana Maria is working with our team to achieve her family goals, like continuing to build her income and improve her parenting skills—all with the goal of keeping her family together for good.

Driving Mission Agility



Photo by Jennifer Hardy/CRS

CRS transforms lives.

For more than 75 years, we have been driven by the Gospel imperative to assist the world's most poor and vulnerable people. Our scope is unmatched, delivering holistic programs in more than 100 countries. Our vast network of partners offers us the reach to achieve lasting change. And our innovative methods and technologies position us to tackle the most pervasive causes of poverty in the 21st century.

This wide-reaching, multi-faceted work is critical. **And it cannot happen without forward-thinking support for our mission.**

Catholic Relief Services seeks to raise \$145 million to provide flexible funds to drive innovation, leverage resources, act quickly, partner for good and sustain our presence.

CRS is an incredibly careful steward of all gifts—whether at the project, sector or agency level. But it is the flexibility of unrestricted support that allows CRS to operate at its best. These funds drive the agility of our mission, so that CRS can innovate, leverage and partner in ways that maximize efficiency and impact. We can act quickly yet sustainably, both in the moment and for the long term. We can do the most good for the most people.

CRS' mission is both the inspiration and the fuel that propels our agency forward. Through Go FAR, we are ready to take action like never before. It is time to drive our mission forward.

CRS SUPPORTS

159 MILLION
PEOPLE

IN 114 COUNTRIES



Key Approaches

- Advancing Innovation
- Leveraging Resources
- Acting Quickly
- Partnering for Good
- Sustaining Our Presence

Driving Mission Agility: The CRS Approach

Through our Driving Mission Agility priority, Catholic Relief Services reaches the world's most vulnerable people. Go FAR is the catalyst that will drive the CRS Vision 2030 strategy and take our Gospel work to the next level, scaling across entire regions. That's why support is critical: It drives foundational work, achieved through five key approaches that are unique to CRS, our strengths and our values.

Key Approaches

ADVANCING INNOVATION

CRS is not afraid to use groundbreaking methods and technologies. Our innovations reduce costs and errors, while expanding opportunities.

CRS impact investment projects in Central America are pioneering a **Blended Finance** model that empowers small-scale farmers and water service providers. By utilizing philanthropic investments wisely, CRS can mobilize capital support and technical assistance, thereby uniting diverse players and sources of funding to accomplish more together.

LEVERAGING RESOURCES

CRS keeps overhead costs minimal. More than 92% of revenues go directly to programs serving people in need. Such efficiency is possible because unrestricted gifts allow us to leverage public funds.

As part of our recent **Malaria** programming, \$5 million in private funding helped CRS complement and leverage more than \$100 million in new and existing support and reach 80 million people.

ACTING QUICKLY

CRS responds immediately to emergencies, without waiting for public funding or attention. We also pre-position supplies so not a moment is lost. This planning saves lives.

When the **COVID-19** pandemic sent our program in the Philippines into lockdown with just one day's notice, CRS had the resources available to move 98 families into safe homes with weeks of food.

PARTNERING FOR GOOD

CRS is welcomed into remote communities because of the trust we have built over 75 years. Through our network of 2,000 Church and secular partners, CRS is in the unique position to turn its values into action.

Through **Emergency Programs** across the Middle East—from Gaza to Iraq—Caritas and other close Church partners on the ground ensure CRS can reach and serve refugees and others affected by conflict, providing for basic needs and promoting social cohesion.

SUSTAINING OUR PRESENCE

CRS can reach and sustain a presence in some of the most isolated and challenging environments. These are places where others do not go—places that restricted public funding often does not reach.

CRS' **Inclusive Education** project in Afghanistan provides girls and boys in rural areas the chance to go to school for the first time. Even when public favor forgets these children, we do not walk away.

“

Now my kids will always
have a place to call home.
I know I'll be able to keep
them safe.”

—Girli



Pictured: Girli and her three children were uprooted after Typhoon Haiyan hit the Philippines in 2013, but with CRS support, they now have a safe home. Photo by Jennifer Hardy/CRS

Learn more about Girli and her family at
gofar.crs.org

The Call to Go FAR

A Message From the Co-Chairs

Because we should, and because we can. That is the call of the Go FAR campaign, compelled by our critical Gospel mission.

We know there is tremendous need in the world. Our most vulnerable brothers and sisters are suffering, and we feel the imperative to help. We seek to serve those with the least. Whatever their race, religion or nationality, we offer hope to the people who are most forgotten. Not because they are Catholic, but because we are. **This is what we should do.**

So how do we ensure the greatest impact for good? We invite you to join us as we go far together with CRS.

In alignment with the CRS Vision 2030 strategy, the Go FAR campaign sets ambitious targets toward real and lasting change. We are emboldened in this leap forward by our experience, our commitment, our Church partners and our extraordinary supporters. Together in faith, our actions will achieve transformational results. **This is what we can do.**

As co-chairs for this campaign, we are inspired by this moment of opportunity to drive impact like never before. It is time we redefine what is possible. It is time we challenge our expectations—of ourselves and of all people. It is time we transform the world, **because we should and because we can.** We ask you to join us.



Mary Jane and Glenn Creamer
CAMPAIGN CO-CHAIRS



Karen and Mark Rauenhorst
CAMPAIGN CO-CHAIRS

Campaign Steering Committee

CRS extends our deepest thanks to the members of our Campaign Steering Committee. Your visionary leadership and unwavering generosity are driving this movement forward, in faith, for the most vulnerable around the world.

HONORARY CHAIR

Cardinal Timothy Dolan

CO-CHAIRS

Mary Jane Creamer

Glenn Creamer

Karen Rauenhorst

Mark Rauenhorst

MEMBERS

Sean Callahan

Geraldine Carolan

Sarita Hanley

Charles Mulaney

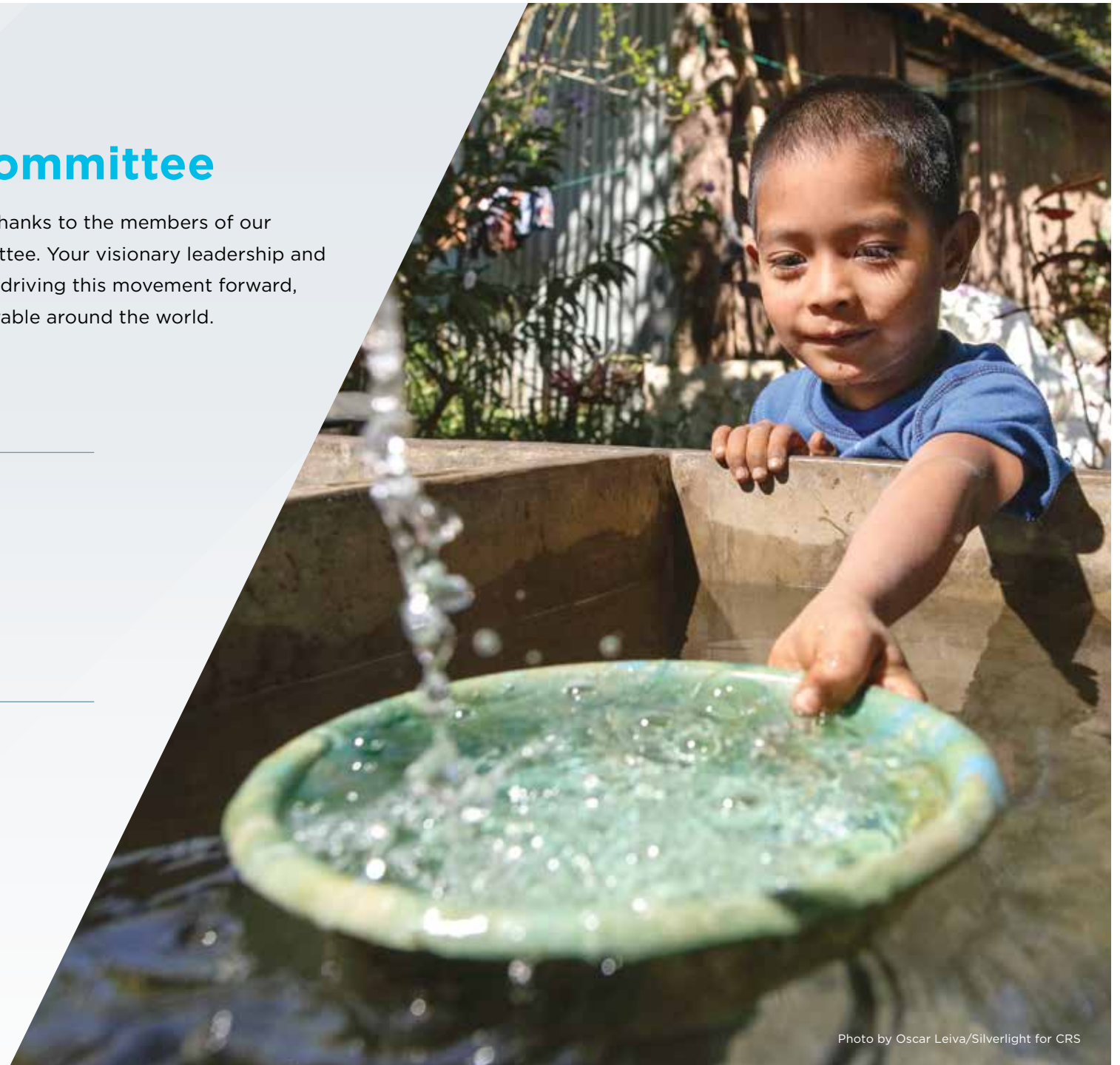


Photo by Oscar Leiva/Silverlight for CRS



Go FAR At A Glance

Go FAR: The Campaign for Catholic Relief Services is seeking to raise \$275 million in five years to fulfill our 10-year Vision 2030 strategy.

**For the latest
information on our
progress to date, visit
gofar.crs.org.**



Building Homes

GOAL: \$45.5 MILLION

TARGET: BUILD HOMES
FOR 1.5 MILLION PEOPLE

Key Projects:

- Building Homes for Refugees in Uganda
- Building Homes for Survivors of Emergencies in Asia



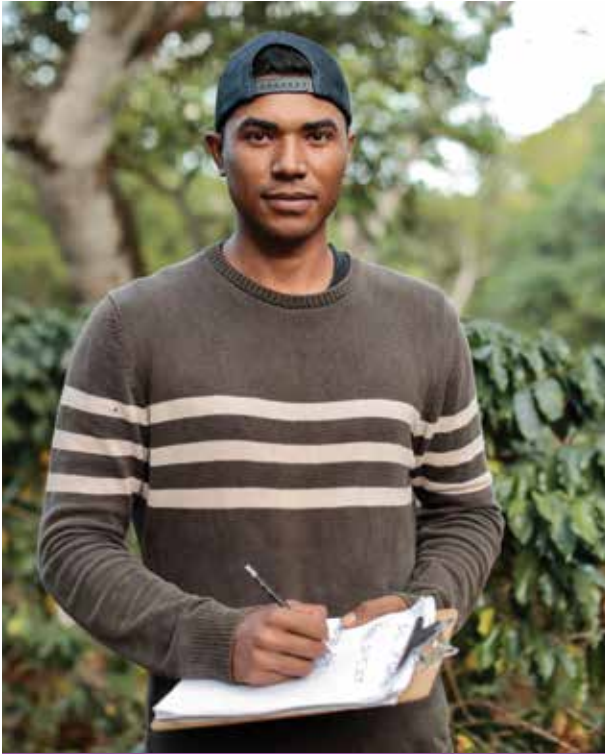
Transforming Livelihoods

GOAL: \$45.5 MILLION

TARGET: HELP 1 MILLION
FARM FAMILIES

Key Projects:

- Protecting Rainforests in Madagascar
- Promoting Water-Smart Agriculture



Empowering Youth

GOAL: \$26 MILLION

TARGET: EMPOWER 5 MILLION
YOUNG PEOPLE

Key Projects:

- Fostering Workforce Development
- Boosting Digital Entrepreneurship in East Africa



Strengthening Families

GOAL: \$13 MILLION

TARGET: SUPPORT THE FAMILIES
OF 1 MILLION CHILDREN

Key Projects:

- Changing the Way We Care
- Supporting Vulnerable Children and Families



Driving Mission Agility

GOAL: \$145 MILLION

TARGET: DELIVER FLEXIBILITY
TO TRANSFORM LIVES AT SCALE

Key Approaches:

- Advancing Innovation
- Leveraging Resources
- Acting Quickly
- Partnering for Good
- Sustaining Our Presence

Ways to Give /

The road to Go FAR unfolds in many directions. Listed below are new giving opportunities designed to meet your needs while having the most impact for the people we serve overseas.

Commemorative Opportunities

TRANSFORMATIONAL SOLUTIONS

These opportunities realize CRS' strategic vision for bold and innovative change at scale. They can be established and named for restricted gifts above \$1 million to Go FAR Campaign priorities. Speak with your CRS relationship manager for more details.

IMPACT INITIATIVES

These opportunities realize strategic impact and significant results for restricted gifts to Go FAR Campaign priorities. They can be established and named for gifts above \$125,000. Speak with your CRS relationship manager for more details.

MISSION FUNDS

For those most motivated by the CRS mission, these opportunities provide maximum flexibility to advance the agency's strategic direction through the Driving Mission Agility priority. They can be established and named for gifts above \$125,000. Speak with your CRS relationship manager for more details.

For more about Go FAR's commemorative opportunities, contact 877-435-7277 or gofar@crs.org

Giving Instruments

OUTRIGHT GIFTS

Contribute gifts of stock, bonds, mutual funds, life insurance, IRA direct transfers or real estate.

PLEDGE GIFTS

Fulfill a multi-year commitment to CRS via cash, credit, stock or a planned gift.

LIFE INCOME GIFTS

Provide future support for CRS, a meaningful income tax deduction and an income for life or a specified term. Types of life income gifts include: charitable gift annuities, charitable remainder trusts, and charitable remainder annuity trusts of fixed income or variable income.

RETIREMENT PLANS

Name CRS as a beneficiary of your savings account, investment or brokerage accounts, IRA, 401(k), 403(b), insurance policy or other qualified retirement plan for a tax-efficient way to include CRS in your estate plans.

WILLS OR TRUSTS

Make a bequest to CRS through your will or trust to provide for the future work of CRS as a testament to your faith. Your bequest to CRS is free of income, capital gains and estate taxes.

CHARITABLE LEAD TRUSTS

Similar to a life income gift but in reverse, provide income from your charitable lead trust to CRS. When the trust terminates, the remainder transfers back to you or your other beneficiaries.

DONOR ADVISED FUNDS

Choose a sponsoring organization—often a community foundation or university—to contribute to CRS. You will receive a one-time charitable tax deduction the year you establish your donor advised fund.

For more about these giving instruments, contact 877-435-7277 or gofar@crs.org.

Choosing a way to give will depend on your personal circumstances and financial goals. Please consult your financial advisor, estate planner or tax attorney to determine the best option for you.

Go FAR, Go Now

CRS invites you to join us as we Go FAR in our journey of faith, action and results for the world's most vulnerable people.

LEARN MORE ABOUT OUR CAMPAIGN OPPORTUNITIES

by calling 877-435-7277 or emailing gofar@crs.org.

SEE AND HEAR THE PEOPLE WE SERVE

through our videos and monthly podcasts at gofar.crs.org.

Go FAR is a call to tackle the root causes of human suffering for the whole person, the whole family, the whole community. We could not do this alone. Thank you for your faith-filled support.

“

Catholic Relief Services is already there. They don't parachute in when there's a disaster. They already know the folks; they already know the terrain. They've already got supplies and a network there.”

—Cardinal Timothy Dolan



Pictured: Cardinal Dolan visiting CRS partners near Bhubaneswar, India, in 2009.
Photo by Amiran White for CRS

Because We Should. Because We Can.

Go FAR: The Campaign for Catholic Relief Services is seeking
\$275 million over five years in support of the CRS Vision 2030 Strategy.

gofar.crs.org



228 West Lexington Street | Baltimore, MD 21201-3443 | crs.org

Photo by Philip Laubner/CRS

©2021 Catholic Relief Services. All rights reserved. 21CG 335865